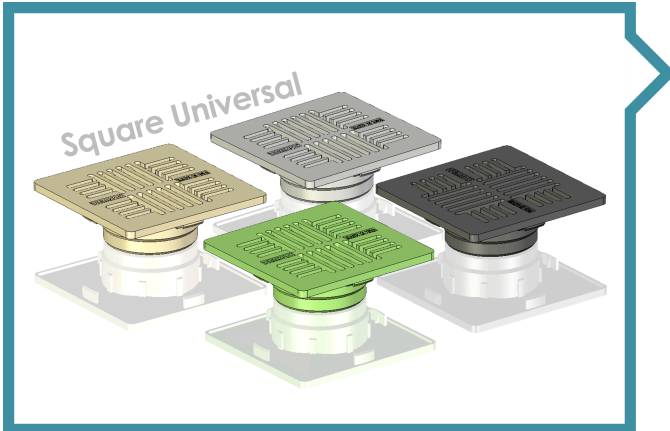


## SQUARE UNIVERSAL GRATE: 7"

For more info, visit our website at [www.tempoinc.com](http://www.tempoinc.com).



### Features:

- Manufactured from structurally foamed High Density Polyethylene (HDPE).
- UV stabilized to protect from sun degradation.
- Available in green, black, sand and grey.
- Textured anti-skid surface.
- Load rated for pedestrian traffic.
- ADA compliant.
- Made in the USA.

Part No.	Description	Fits	Slot Width	Flow Rating	Max Load
G7SUG	7", Flat, Green	3" & 4" S and D Pipe (ASTM D2729),	1/4"	11 GPM	250 lbs
G7SUB	7", Flat, Black	3" & 4" Corrugated Pipe, 3" & 4" Triple			
G7SUS	7", Flat, Sand	Wall Pipe, 3", 4" & 6" S and D Fittings			
G7SUC	7", Flat, Grey	(SDR 35), 6" Round Catch Basin			

- Maximum load rating based on basin encased in concrete and weight uniformly applied across entire grate surface.